

JBC

www.jbctools.com

**PH
CONTROL
SOFTWARE**

INFRARED PRE HEATER

PH CONTROL SOFTWARE

This manual is valid for version H010403

- Retrieve the programs that are saved in a PH unit.
- Load the programs saved in a file.
- Manually edit programs.
- Send edited programs to the PH unit
- Save edited programs to file.

SYSTEM REQUIREMENTS

Operating System: Windows XP / Vista / 7 (no support for “windows 7 starter” edition)

Screen: 1024 x 768, 256 colors (minimum); 1024 x 768 high density color, 32-bit (recommended)

Port RS-232: Does not work with USB-converter

Null modem cable: DB-9 Female to DB-9 female.

INSTALL AND UNINSTALL

For software **installation** run the installer program and follow the wizard instructions.

The installer creates the following folder: *JBC / PreheaterUpdate*.

In order to **uninstall** the program, execute the option “Uninstall” found in: *JBC / Preheater* in the *Start* menu.

APPLICATION DETAILS

Running the Preheater program. Will display the following:

The screenshot shows the JBC PH Control H010403 software window. It is divided into several sections:

- PC Configuration:** Includes dropdowns for PC Interface (COM1) and Device Selection (PH Unit).
- Program Selection:** Includes a dropdown for Program Number (1).
- Commands:** Includes buttons for Receive Programs from PH Unit, Send Programs to PH Unit, Load Programs, and Save Programs.
- Program Data:** A table for editing parameters:

	Current Value	New Value
Start Power	50 vV	50
End Power	75 vV	75
Hold Power	50 vV	50
Rise Time	10 s	
Heater Zones	All	All
- PH Unit Configuration:** Includes dropdowns for Temperature Scale (°C), OS Function (OS-OFF), and a text field for Run Time of External Fan (10).

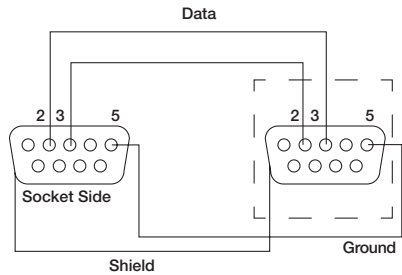
Callouts on the left side of the image point to these sections with the following descriptions:

- PC Configuration:** select the serial port and the device
- Program Selection:** select the number of the program to edit
- Communication Commands:** Send and receive data between PH & PC
- Storage Commands:** Load or save programs stored on PC
- Program Data:** Read and edit the parameters of the programs
- PH Configuration:** See and change general parameters

CONNECTION

To connect the unit with a PC, the following steps should be taken:

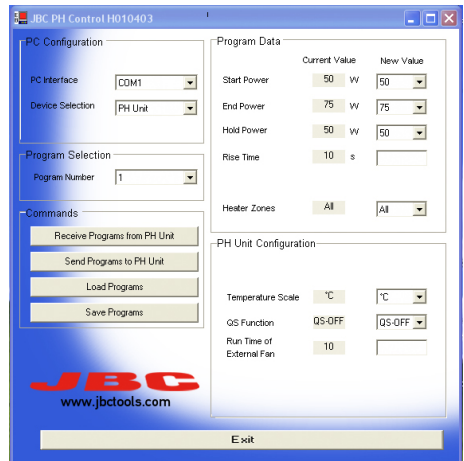
1. Connect PH unit to PC with a DB-9 cable Null Modem, or similar nothing the following:



SAVE PROGRAMS ON PC

Program shown in the application can be saved on the PC with command "Save Programs".

Command "Load Programs" to load parameters into the application from a file saved on the PC.



PH CONTROL SOFTWARE

TRANSFER PROGRAMS BETWEEN PC AND PH

Pressing “Receive Programs from PH Unit” button. Instructions will show how to set PH unit in *Send* mode.

When finishing the process, all programs from PH can be found in the applications screen and can be edited, read and saved a file.

Pressing “Send Programs from PH Unit” button, the instructions of the screen will show how to set PH unit in *Recieve* mode.

When finishing the process, the PH will reset and all programs of the screen will automatically be saved in PH.

